

How to print The Fotospeed Test Chart for obtaining a Custom Profile (Using The Adobe Color Printer Utility)

The logo for Fotospeed is centered on a black rectangular background. The word "Fotospeed" is written in a large, bold, white sans-serif font. Below it, the tagline "for every print" is written in a smaller, italicized, yellow sans-serif font.

Fotospeed
for every print

Printing the Profiling Test Chart

The profiling Test Chart can be printed by a free programme from Adobe called

Adobe Color Printer Utility



The **Fotospeed Profiling Test Pack** (including the Test chart) and **The Adobe Color Printer Utility** programme can be downloaded from the Fotospeed website, under **Support/Printer Profiles/Generic printer profiles**.

Link: <https://www.fotospeed.com/profiles.asp?SeriesID=9&TextID=1>

Important: The test chart does not have an embedded RGB profile and must not be assigned one or be re-sized.

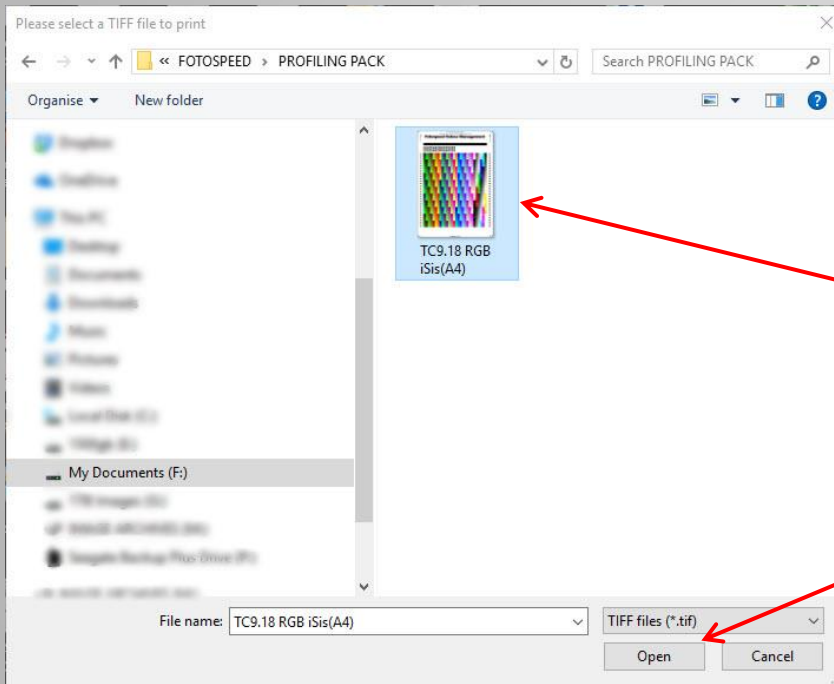
Before Printing the test Chart

- Carry out a nozzle-check to ensure that all nozzles are firing correctly and there are no gaps in the printed pattern. Clean if necessary.
- Lightly shake the sheet of paper to be printed, to remove any paper fibres.

Printing the Fotospeed Test Chart Using Adobe Color Printer Utility. (Download from the Fotospeed website.)



Launch the Adobe Color Printer Utility.

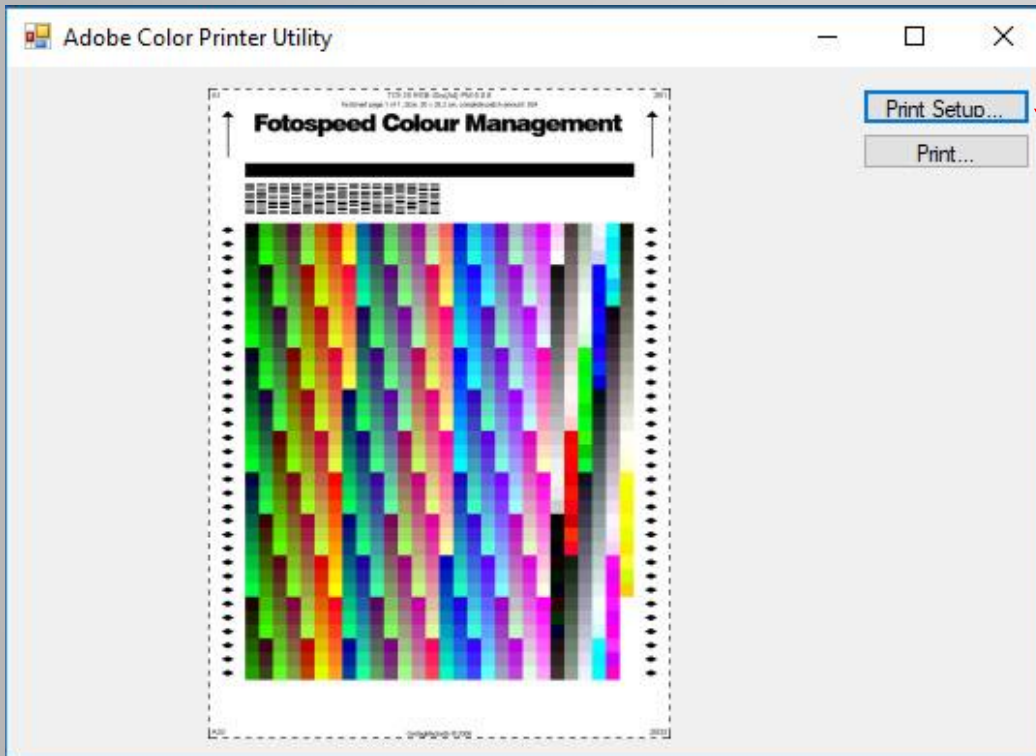


A box will open with the heading
Please select a TIFF file to print

Select the Fotospeed Test Chart
.TIFF image. **TC9.18 RGB iSis(A4).tif**
(You will find this image in the Fotospeed Profiling Pack)

Click **Open**.

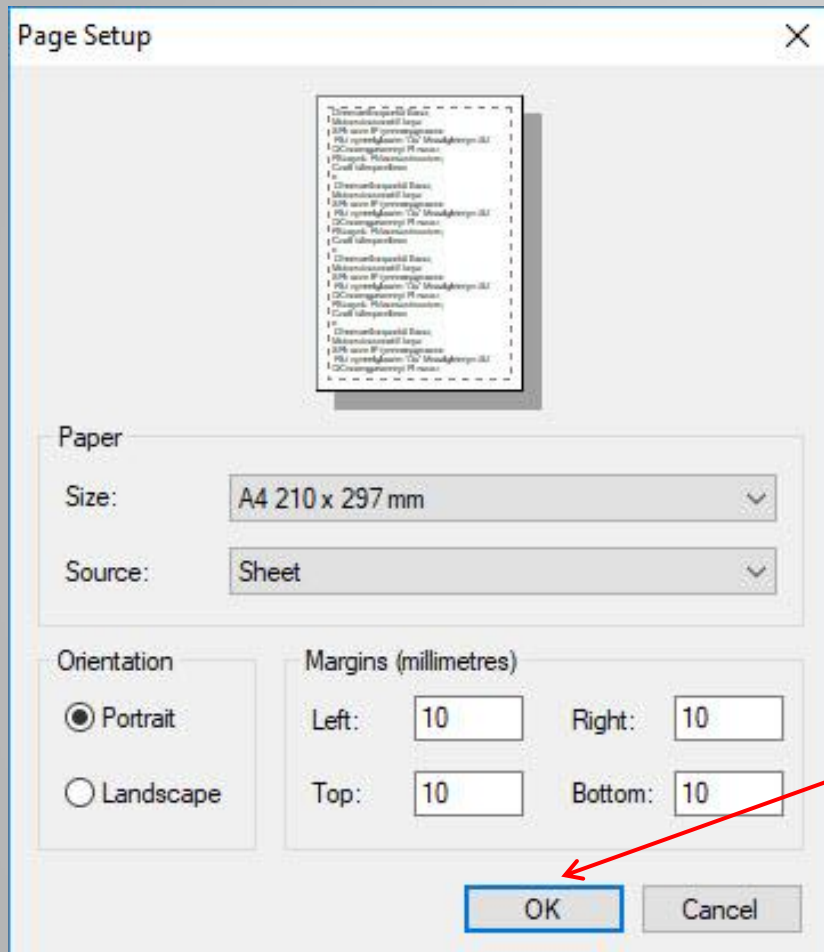
Printing the Fotospeed Test Chart Using Adobe Color Printer Utility.



You will now see this Adobe Color Printer Utility dialogue box.

Click on **Print setup.**

Printing the Fotospeed Test Chart Using Adobe Color Printer Utility.



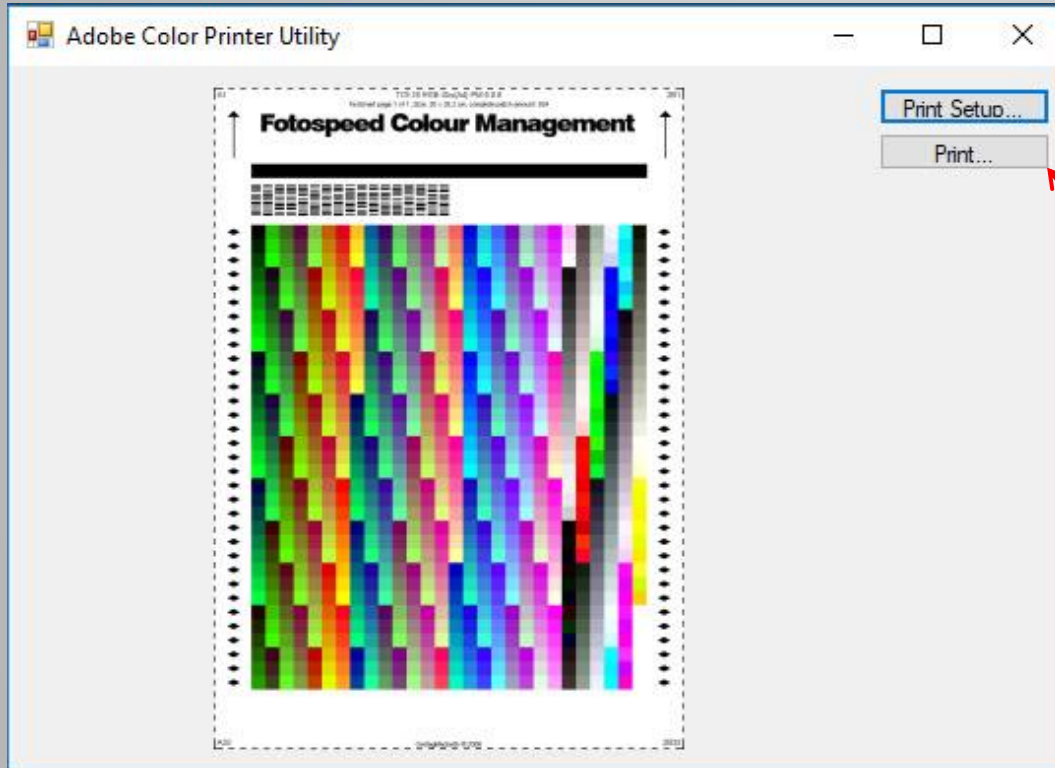
You will now see this **Page Setup** dialogue box.

Make sure that:

- The size is A4
- The Source is correct for your printer
- The Orientation is portrait
- You do not change the margins

Then click **OK**.

Printing the Fotospeed Test Chart Using Adobe Color Printer Utility.



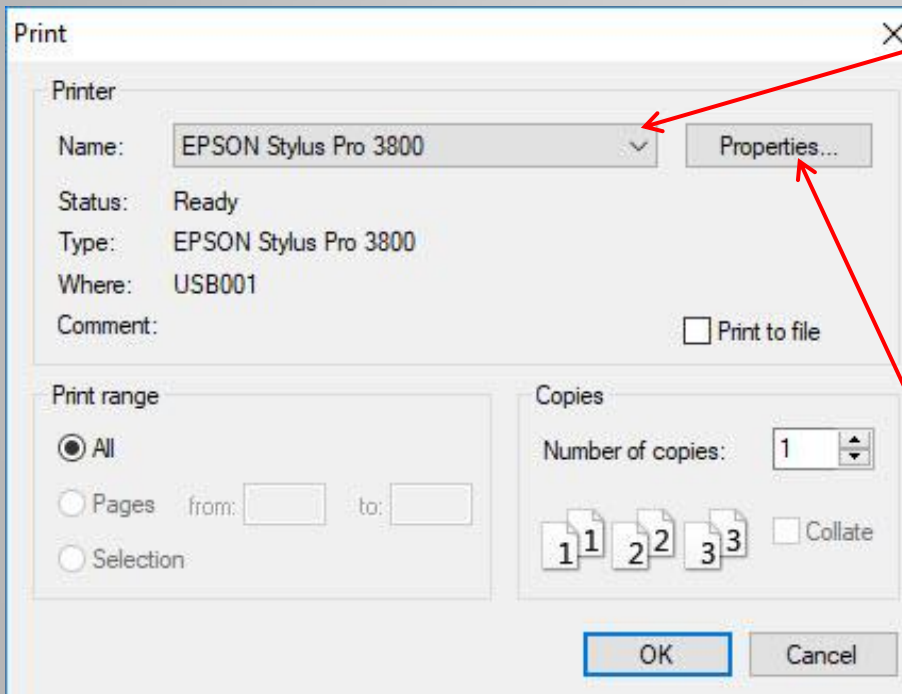
You should now see this **Adobe Color Printer Utility** dialogue box again.

Click **Print**.

Printing the Fotospeed Test Chart Using Adobe Color Printer Utility.

You should now see this **Print** dialogue box.

Select your printer from the drop down menu.



DO NOT CLICK OK as this will print the Test Chart and you have yet to set the properties.

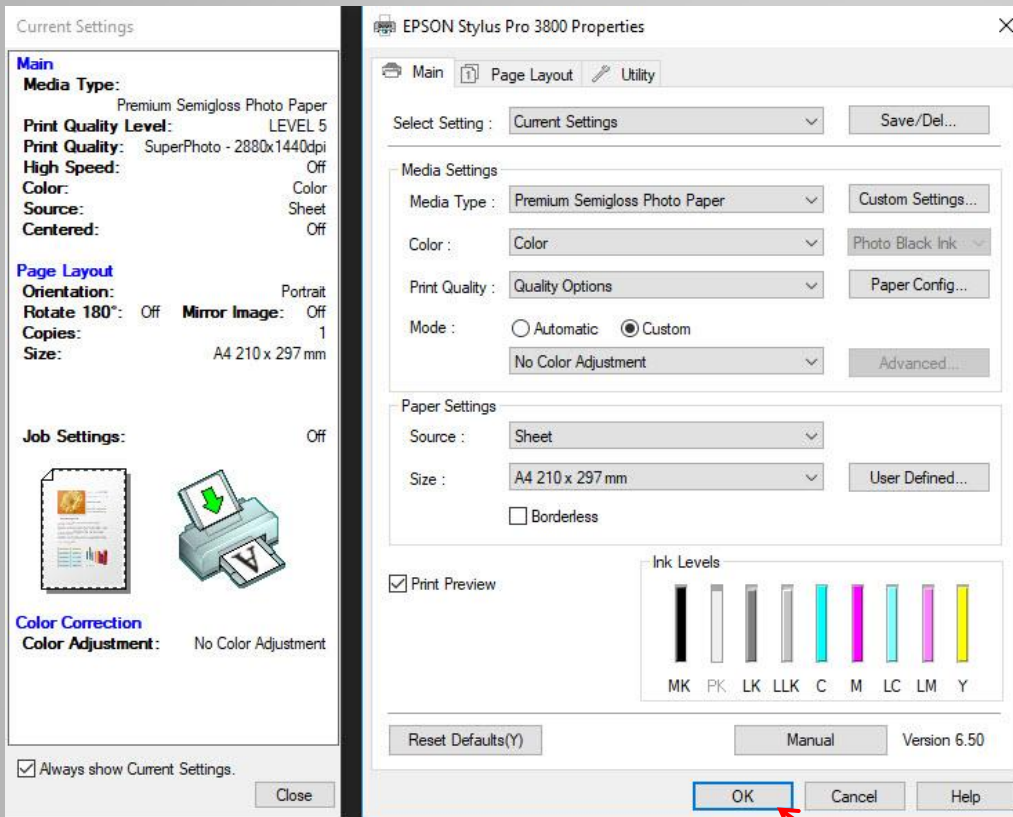
Click on **properties.**

Printing the Fotospeed Test Chart Using Adobe Color Printer Utility.

You should now see a dialogue box to set up your printer properties.

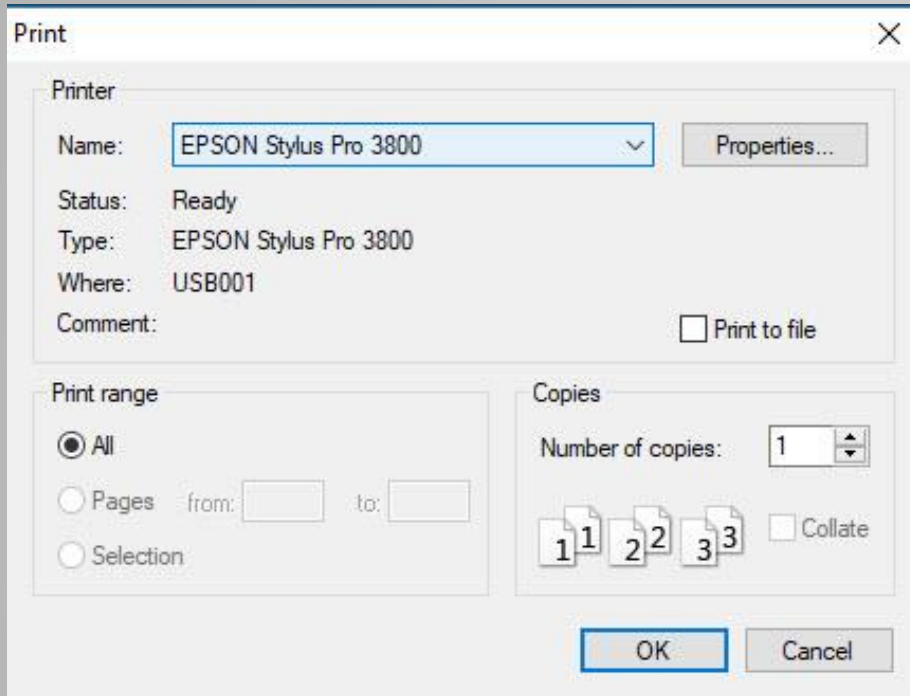
Each printer varies on how settings are selected, but you should set the following.

- Media Type
(ask Fotospeed for advice if unsure)
- Color
- Print Quality (Printer dpi)
- High Speed (**OFF**)
(For best quality prints)
- Mode (**No Color Management**)
- Paper settings
(Source, size and orientation)
- Save as a pre-set if possible



When you have set the properties **click ok.**

Printing the Fotospeed Test Chart Using Adobe Color Printer Utility.



You should now see the Print dialogue box once again, but now that you have setup the properties you can click **OK**.

Your printer will now print the Test Chart at your chosen settings.

When you have printed off the test sheet at your chosen settings, send it to Fotospeed to create your Printer Profile for this **Printer / ink / Paper combination**.

IMPORTANT: The settings that you used in the printing of the Test Chart for your **Printer / Ink / Paper combination** are the settings you must use, in conjunction with the profile that Fotospeed will create for this **Printer / Ink / Paper combination** when you print.

Getting your Profile/s

- Send the printed test chart/s to Fotospeed in a card backed envelope
- Fotospeed will create your profile/s and send them to you via e-mail
- Install your profile/s
- **HELP** in printing your Profiling test Chart.
We can do this all for you remotely using Log Me In.
If you are unsure or slightly confused with regards setting your colour settings in Photoshop and switching off colour management in your print driver, for a small fee of £20 we can do it all for you.
- Simply call us on **01249 714555** and select technical support.
We will direct you to the correct webpage and take control of your mouse, set all your settings correctly and print off you test chart.
All you have to do is fill in the supplied booking form and pop it in the post along with the test chart that we print off for you.

Profile Installation Instructions - PC



1. Save the profile e-mailed to you by Fotospeed to somewhere convenient, like My Documents or Desktop.
2. Right-click on the saved file (which should show as an RGB triangle as above).
3. Select the top option from the menu – **Install Profile**.
4. Open Photoshop. If already open then close and re-open.
5. So where has your profile been put? Navigate to My computer/ local disk C / windows / system32 / spool / drivers / color. And there you are, this is where your profiles are.
6. To use the profile correctly refer to the last page of the Test Chart printing Instructions.
7. To uninstall your profile either right click on the profile on the desktop and choose UNINSTALL or go to the profile as shown in 5 and delete it.

You cannot rename your profiles. (If you do, they will not work)
Only Fotospeed as the creator can.

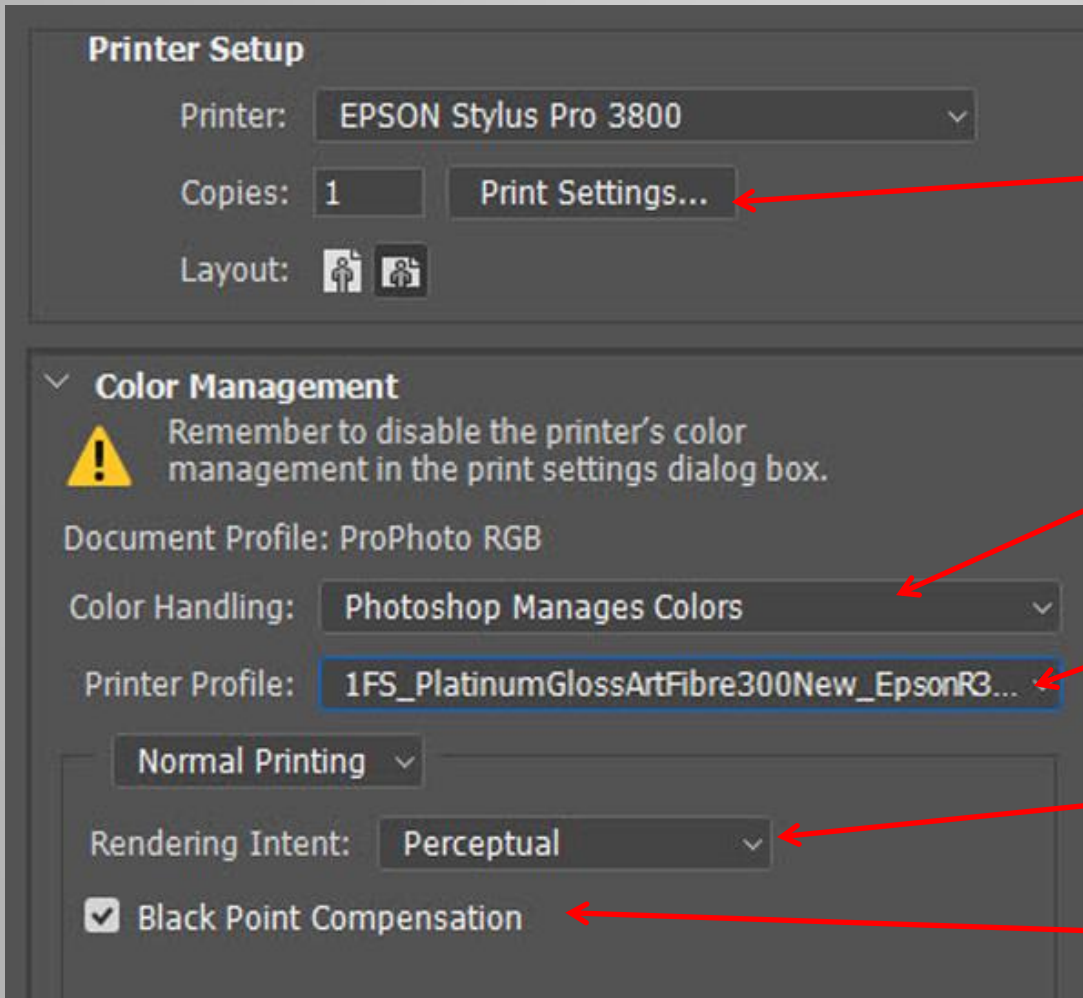
Profile Installation Instructions - Mac

1. Drag and drop the profile onto your desktop.
2. Navigate to: HD/ Your name/ Library/ ColorSync/ Profiles
3. Drag and drop the profile into the profile folder.
4. Open Photoshop. If already open then close and re-open.
5. To use the profile correctly refer to the last page of the Test Chart printing Instructions.

You cannot rename your profiles. (If you do, they will not work)
Only Fotospeed as the creator can.

Using your new Fotospeed Custom Profile Printer Set-up

NOTE: It is most important that you now print your images using the same settings that you printed your test chart, but you can change paper size and orientation



On this particular dialogue box, in Adobe Photoshop CC this is where you create and find the list of pre-sets for each of your papers.

Select **Photoshop Manages Color.**

This is where you will find your custom profiles created for you by Fotospeed.

This is where you set your preferred Rendering intent.

Make sure that the Black Point Compensation box is ticked

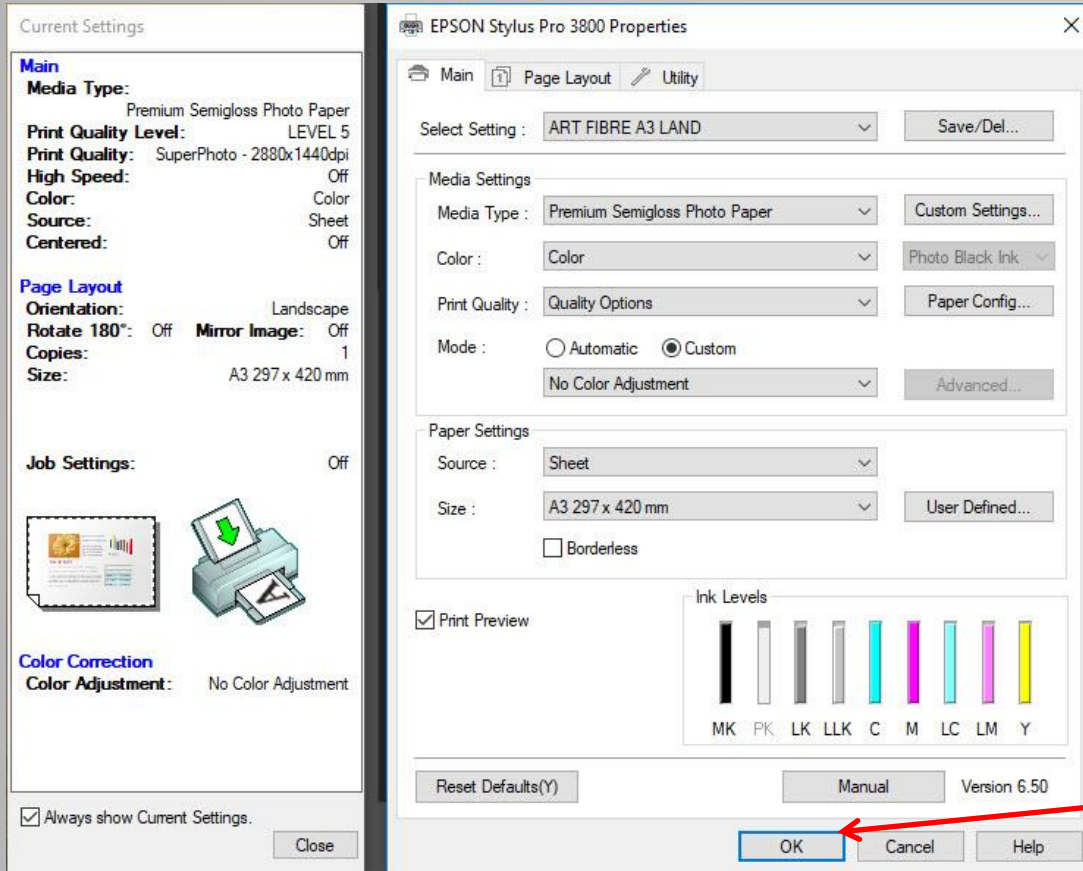
Printer Properties Settings

The screenshot displays the 'EPSON Stylus Pro 3800 Properties' dialog box. On the left, a 'Current Settings' panel is highlighted with a red rounded rectangle. This panel lists various settings under 'Main', 'Page Layout', and 'Job Settings'. The 'Main' section includes Media Type (Premium Semigloss Photo Paper), Print Quality Level (LEVEL 5), Print Quality (SuperPhoto - 2880x1440dpi), High Speed (Off), Color (Color), Source (Sheet), and Centered (Off). The 'Page Layout' section shows Orientation (Landscape), Rotate 180° (Off), Mirror Image (Off), Copies (1), and Size (A3 297 x 420 mm). The 'Job Settings' section is set to Off. Below these are icons for a print job and a printer, and a 'Color Correction' section with 'Color Adjustment' set to 'No Color Adjustment'. At the bottom of this panel are checkboxes for 'Always show Current Settings.' and a 'Close' button. The main dialog box on the right has tabs for 'Main', 'Page Layout', and 'Utility'. The 'Main' tab is active, showing a 'Select Setting' dropdown menu set to 'ART FIBRE A3 LAND', with a 'Save/Del...' button to its right. Below this are 'Media Settings' (Media Type: Premium Semigloss Photo Paper, Color: Color, Print Quality: Quality Options, Mode: Custom, No Color Adjustment) and 'Paper Settings' (Source: Sheet, Size: A3 297 x 420 mm, Borderless). An 'Ink Levels' section shows bars for MK, PK, LK, LLK, C, M, LC, LM, and Y. At the bottom are 'Reset Defaults(Y)', 'Manual', 'Version 6.50', 'OK', 'Cancel', and 'Help' buttons. A red arrow points from the 'ART FIBRE A3 LAND' dropdown to the text on the right, and another red arrow points from the 'Current Settings' panel to the text below.

Here we have selected the saved pre-set for Fotospeed Art Fibre Paper A3 in landscape orientation.

In the current settings list, you can see all the settings of this pre-set.

Printer Properties Settings



You have previously in the printer Set-up, selected your Fotospeed custom profile for your chosen paper and told Photoshop to manage the printing, via your paper profile.

You have also, now selected all the print properties settings for your chosen paper.

You can now click **OK** to print your image.

Printer Settings Checklist

- Photoshop manages color
- Have I selected the correct printer profile?
- Which Media Setting?
- Printer DPI?
- Rendering intent?
- De-Select High Speed? (Single direction printing)
 - ** The High Speed printing setting relates to the printing method of the printer.
- When **High Speed** mode is selected in the Epson printer driver, the printer prints in both directions (from right to left, then left to right [bidirectional printing]). Select this mode to obtain the fastest image printing - please note that as a result the quality of the print may be affected.
- When **High Speed** mode **is not** selected or turned off, the printer prints in one direction only (from right to left [unidirectional printing]). Unidirectional printing is slower than bidirectional printing, and recommended for highest quality image printing.
- (**This Information is from the EPSON website.)
<https://www.epson.co.uk/viewcon/corporatesite/products/mainunits/faq/1178/11959>
- Switch off color management (in the printer dialogue box)

Assessing your Profile



When you receive a profile from Fotospeed it is always a good idea to test it by printing out the Calibration Print supplied in the e-mail with your **Fotospeed** Custom Printer Profile.

The best visual check is that the Greyscale looks neutral with no colour cast.

Assessing Your Prints

- A print should be treated carefully immediately after printing, since although it feels dry, the inks need to be given time to fully dry
- Put your print open to the air, where dust will not settle on it, for at least 4 hours to allow the print to fully dry (Allow to dry for 24 hours if possible)
- Allow time for your print to dry before assessing it
(This time varies from paper to paper)
The colours of a print change over the first hour or so of drying, so always allow at least an hour before assessing a print.
- Never stack prints for drying.
Prints should be dried as quickly as possible and stacking them retards the drying of all but the top print.
This is very important, because ink spreads whilst wet (Dot Gain) and delaying this drying process, may allow the inks to carry on spreading, causing unsharpness, in particular on Art type papers.
- Assess your image under a daylight balanced light
A 5000k light source is best **(D50)**

Printing Tips

- When installing new pigment ink cartridges, shake them well.(Pigment ink settles over time).
- If you do not use your printer for a while (been on Holiday perhaps) the pigment inks may have settled. The remedy for this, is take out your cartridges one by one, shake each one well and re-insert.
- Carry out a nozzle check before a print run.
If you find gaps in the nozzle check printout pattern, carry out the cleaning procedure until you get a perfect printout pattern.
Only then should you start printing.
- Wherever possible, print one single sheet at a time to prevent print surface damage.
- When printing Photographs, load the paper single sheet at a time, to avoid misfeeding.
- If your printer misfeeds on certain papers, even if you only load one sheet, pre-feed the paper into the printer.

Finally

- **Fotospeed** are here to help you get the best out of your chosen papers
- If you have a problem with printing a test chart, installing profiles or anything that prevents you from getting the best performance from your Fotospeed paper

Simply call us on **01249 714555**
and select technical support.